

## Culturally Responsive Strategies for Reforming STEM Higher Education

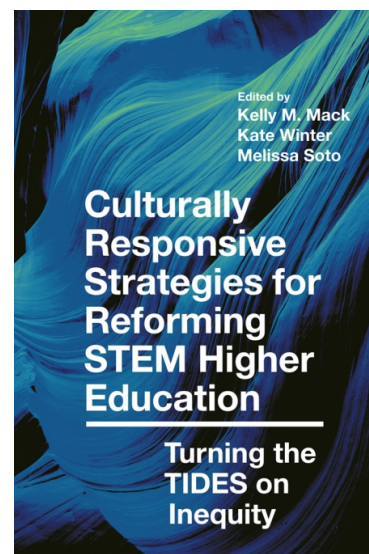
### Turning the TIDES on Inequity

Kelly M. Mack  
Kate Winter  
Melissa Soto

### About the Book

By the end of this decade, the U.S. economy will annually create hundreds of thousands of new jobs requiring a bachelor's degree in STEM fields, particularly computer science. This increasing need for computer scientists, coupled with an inconsistent agenda for managing dramatic shifts in the demographic landscape of higher education, compromises our competitiveness in scientific discovery and innovation. As higher education seeks to address this issue, the need for more culturally responsive approaches to undergraduate STEM teaching also increases.

This book uses the power of reflection, storytelling, and data to holistically demonstrate the effectiveness of a novel professional development intervention for STEM faculty - Teaching to Increase Diversity and Equity in STEM, or TIDES - that significantly increased faculty self-efficacy in implementing culturally responsive pedagogies. In it, the editors combine the authentic voices of authors from multiple institutional contexts and individual worldviews to assimilate and synthesize broad theoretical concepts into practice in usable ways, while also offering concrete applicable examples of strategies and solutions that serve as an important comprehensive reference for all undergraduate educators and administrators. This practical guide provides a durable platform for building capacity in understanding of the cultural complexities and institutional realities of recruiting and retaining diverse students in STEM, particularly the computer sciences.



Format: Paperback  
Pagination: 304  
Price: £26.99 \$35.99 €31.99  
Publication Date: 5th Sep 2022  
ISBN: 9781787699540

Enjoy 30% off this ebook with code **EME30** on [ebooks.com](https://books.emeraldinsight.com) or off the print book when placing an order via [booksales@emerald.com](mailto:booksales@emerald.com) and quoting the code **EME30**.